

Figure 1



Geologic Sketch Map Showing Newly Discovered Gold-Bearing Black Jasperoid
SPCNAD83feet
May 2013

Section 9

Section 16

T.27N,
R.34E.



- A - Conglomerate Marker Unit
- B - Gabbro DIKES
- C - Orogenic quartz-tourmaline veins
- D - Jasperoid in deformed Limestone
- E - Jasperoid in deformed limestone -- Mapping & sampling in progress.

Section 17

- FAULT
- Thrust Fault

NORTH TARGET AREA

NNE-trending Jasperoid Faults

Cross-Section Figure 2

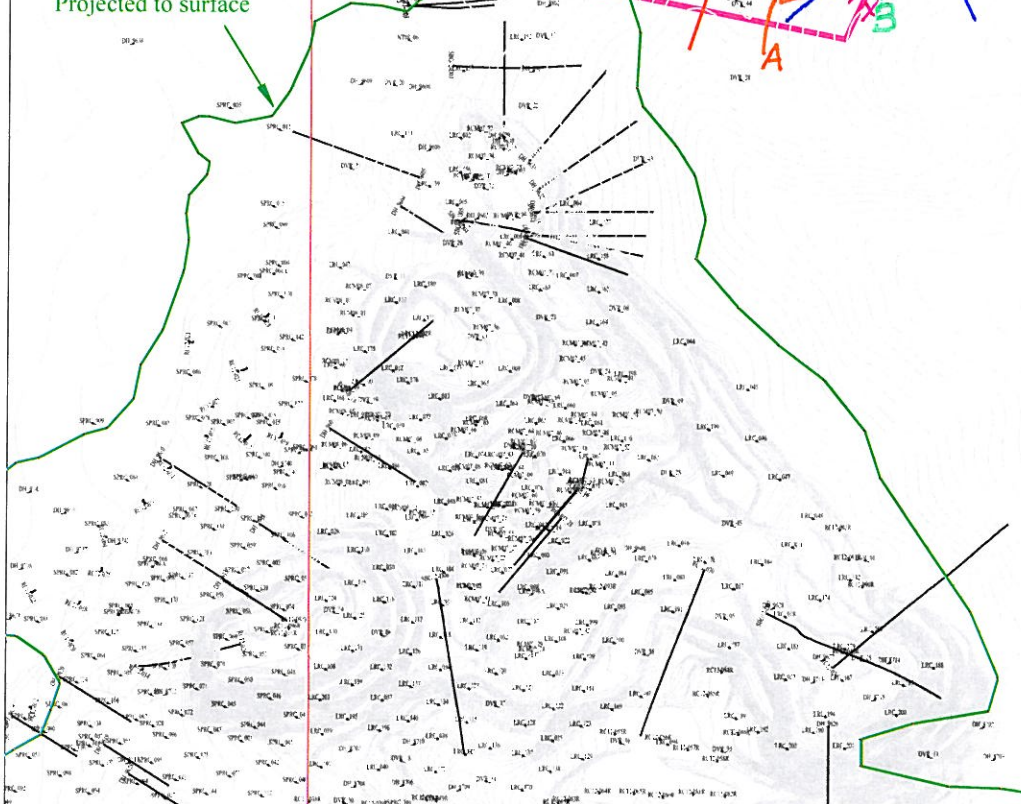
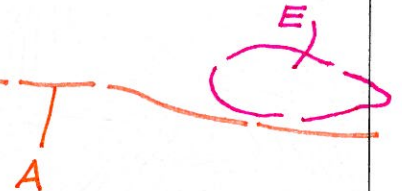
NT08-D03

NT08-D01

NT08-D04

SECTION 116N

Block Model Resources Projected to surface



Section 20

Section 16

